

Walk, cycle or ride in any season.

The Collie Darkan Trail can be accessed from either Buckingham, 21 kilometres east of Collie, or from Darkan.

This unique trail passes through bushland and picturesque farmland following the East branch of the Collie River and the Coalfields Road. The flora and fauna is quite diverse. Wildflowers are prolific in spring and you never know what wildlife you might meet along the way.

The Collie-Narrogin Railway, where it all began.

Construction initially began in 1904 from the Narrogin end and from the Collie end in 1906. The Narrogin-Darkan section was opened in September of the same year and the first train arrived in Collie from Narrogin in October 1908 after the Collie-Darkan section was completed.

Bowelling became a junction when the Wagin-Collie line was built around 1916.

The railway line serviced the rural districts taking out timber products from various timber mills between Collie and Darkan, farm produce, livestock and grain. Building materials, machinery, fertiliser and household goods were some of the things brought in by train. In the early years (before cars) a passenger service was also available.

Steam locomotives were used up until the late 1960's when diesel loco's were introduced, however, with the growth of road transport in the 1970's the amount of rail freight declined rapidly with the last train running in 1979.

The rails and most of the sleepers were removed in the early 1990's leaving the railway corridor unused until the dream of a rail trail was born and a small group of dedicated volunteers brought it to fruition some ten years later.

For more information about the trail or the 'Friends of Group', email us on cdrtg@westnet.com.au.

Friends of Collie to Darkan Rail Trail Group Inc.

The group was formed in 1999 and has since been working on establishing the first "Rail Trail" of considerable length (approx. 46 kilometres initially) in WA. The founding members share a common vision of turning the disused rail corridor between Collie and Darkan into a facility that walkers, cyclists and riders from all over the world may enjoy.

Our aims are to:

- Increase awareness of the Trail and its benefits.
- Encourage community ownership of the Trail and involvement with its upkeep.



Wildflowers may be seen along the trail.

JOIN HERE!

The Secretary
PO Box 87, Darkan 6392 WA

Annual Membership

Individual	\$10.00
Family	\$20.00
Affiliated Group	\$20.00
Corporate	\$50.00

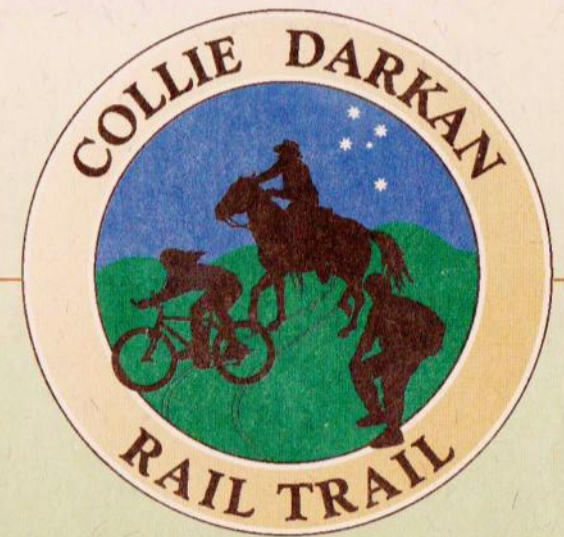
Name

Address

.....

Phone

All Donations warmly accepted



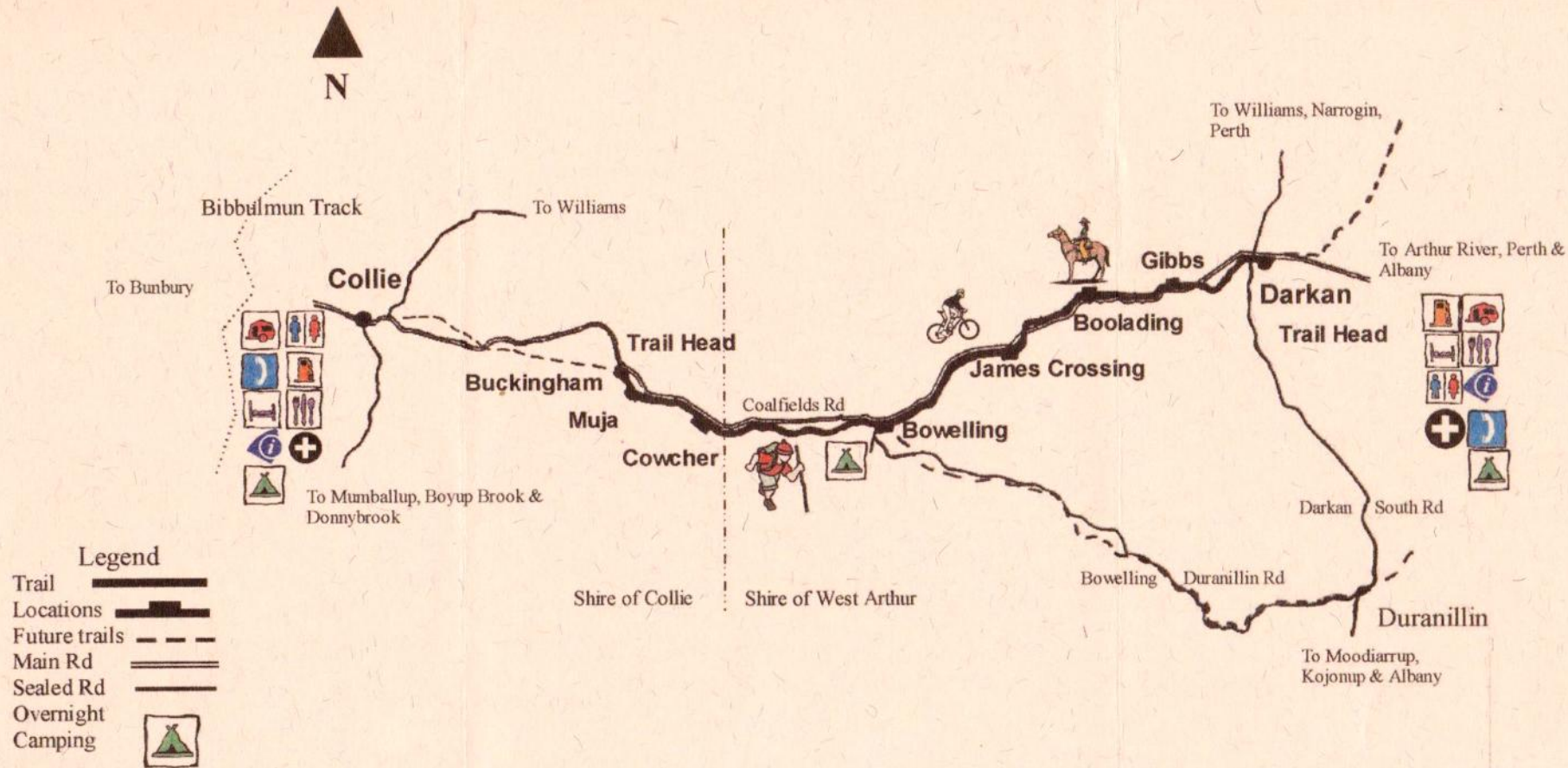
Walk Cycle Ride



Darkan Railway Station

Made possible by:

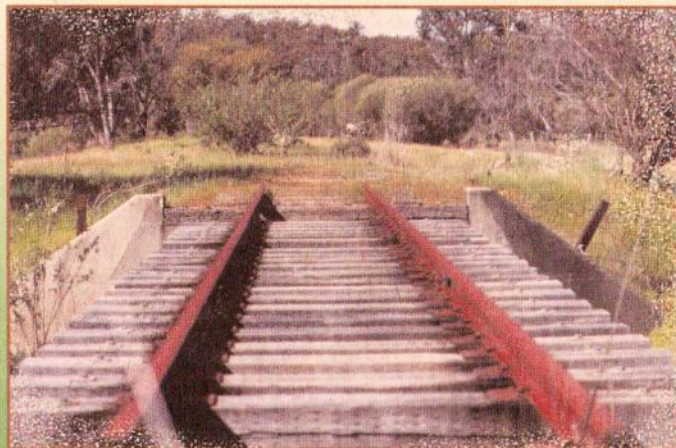
The Friends of Collie to Darkan Rail Trail Group Inc
Lotterywest
Department of Sport & Recreation
and the Shires of Collie and West Arthur



Trail Statistics

Locations	Distance	Height A.S.L.
Collie-Buckingham	(road) 21km	607' - 697'
Buckingham-Muja	(trail) 2km	697' - 708'
Muja-Cowcher	(trail) 5km	708' - 726'
Cowcher-Bowelling	(trail) 11km	726' - 774'
Bowelling-James Crs	(trail) 9km	774' - 822'
James Crs-Boolading	(trail) 7km	822' - 884'
Boolading-Gibbs	(trail) 5km	884' - 1044'
Gibbs-Darkan	(trail) 7.5km	1044' - 848'

Trail length 46.5km



Trail Facilities

Bowelling Station is the main overnight stopover point but siding sites may be used if required. Please carry sufficient food and water for two to three days trekking and arrange pickup at either trailhead.

Future of the Trail

It is intended that the Rail Trail will link the towns of Collie and Darkan when it is completed.

At this stage though, part of the original railway line between Collie and Buckingham is within an area being mined for coal just west of Buckingham. When the mining operations are completed the area will be rehabilitated and the original road and rail reserve reinstated. The trail will then be continued to Collie.